

9.29.23

Attached is a Tee Renovation Plan which summarizes my recommendations for improving playability at Bemidji Town & Country Club. Many of these recommendations were provided previously as part of the Master Plan study and subsequent annual discussions on site. This is an updated version which is directed specifically at tees.

Currently a number of the Gold and White tees share the same tee pad and the same yardage. Similarly, a number of red tees share the same tee pad as the gold tee. As a result, this lack of variety has created numerous playability issues. In his memo, Mr. Welle observed that the lack of variety on holes 5,6&8 and suggested moving the gold tee markers. In some cases this could be an inexpensive temporary option but the proper long term solution is to construct a number of new tees.

The current forward tees play approximately 5,000 yards. That is about 500 yards too long to provide a suitable option for seniors and juniors with a swing speed of 55-65 miles per hour and capable of hitting their driver around 150-160 yards. Ideally, the Gold Tees should play around 5,200 to 5,500 yards to be suitable for someone capable of hitting their driver 190-210 yards. Unfortunately many of the tees from the Gold and Red Tees play disproportionately long or short and that makes the course and individual holes play disproportionately difficult or easy. This is most notable on the par three holes which currently play 210, 183, 193 and 181 yards from the back tee and 110, 143, 136 and 110 yards from the forward tees. This means a lower handicap golfer with a swing speed of 125 mph is hitting 5 iron, 7 iron, 6 iron and 8 iron while the golfer with a 60 mph swing speed playing the forward tees is hitting hybrid, 3 wood, 5 wood and hybrid. Ideally, I like to see a club to a club and a half difference between each of the par threes to provide variety. With the recommended changes, the par three forward tees would play 85 yards, 95 yards, 105 and 120 yards (8 iron, 6 iron, hybrid and 3 wood) from the forward tees.

Constructing a number of new forward tees will allow those younger and older golfers with a slower swing speed to move forward to play at a yardage more appropriate to their ability and/or age while at the same time improving pace of play and providing for more variety and a more enjoyable round. I am proposing new forward tees on holes 1,2,3,5,7,9,10,11,13,15,16,&18. These are usually fairly easy and inexpensive to construct and can often be built by simply stripping the turf, leveling the area and relaying the turf. I am also suggesting new gold tees on holes 4,5,6,8,9&17. In addition, I am still recommending that you revise color system from red, gold, white and blue to something that would require golfers to select the proper tee based on score card yardage rather than color alone.

As we have discussed in the past, the changes to the tees on hole 14 are significant. It involves regrading the hillside to enlarge the tees and reroute the cart path. This will make the tees more accessible and eliminate having to hit over the cart path.

Lastly, you will note that I am suggesting that you realign the fairways on holes 4,9,10 & 18 prior to installation of the new irrigation system. With today's equipment, the dogleg points have changed and in order to modernize the course, I am suggesting that you remove some trees and change the mowing lines on those holes so the irrigation can be installed where the fairways should be. On hole 18 we have talked about enlarging the irrigation pond to increase storage capacity. Shifting the tees to the right and enlarging the pond will also make the pond more visible from the tee.

There's a lot of information here and it will take some time for the Club to decide which tees or projects are of highest priority. Please feel free to call me if you have any questions. Thank you and good luck.

Kevin Norby, ASGCA, RLA



Phone: (952)361-0644

Email: Kevin@NorbyGolf.com

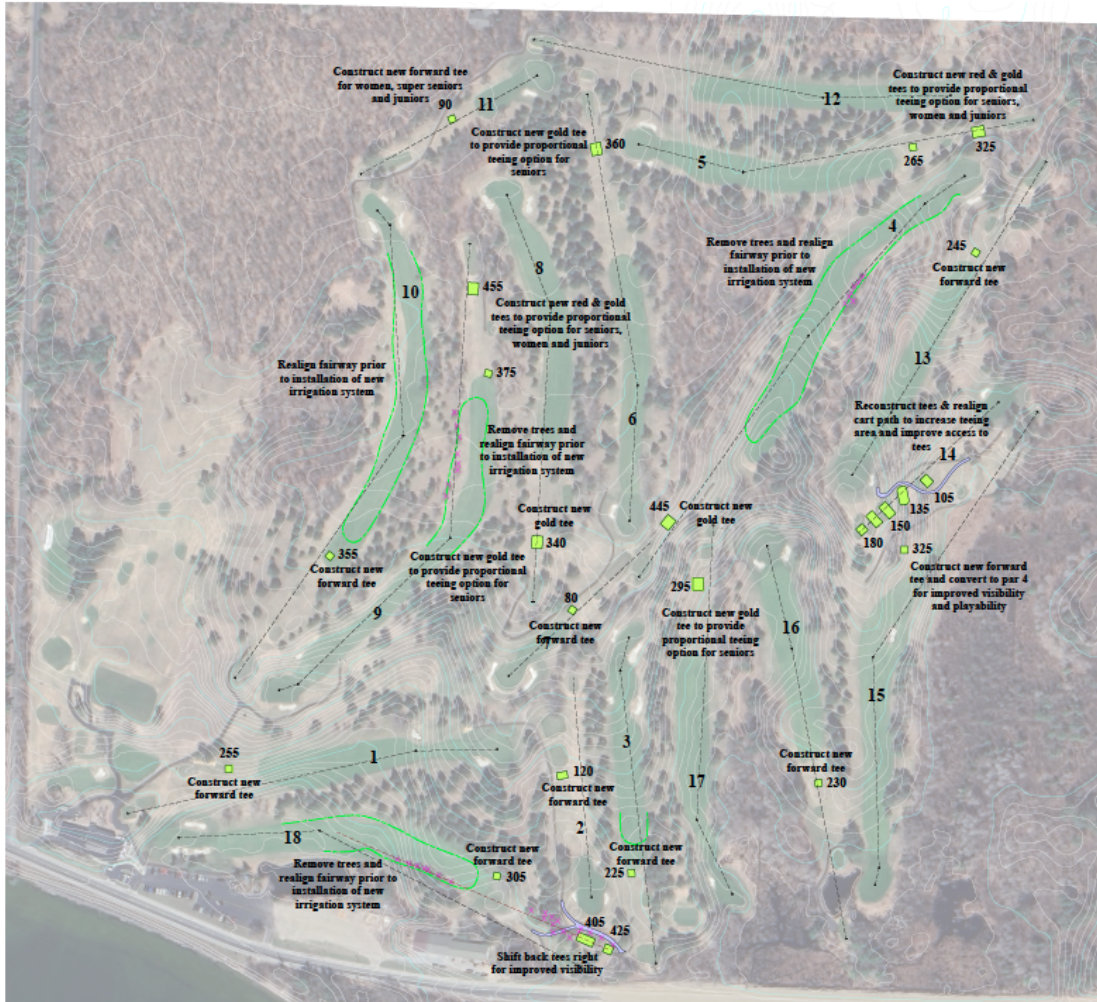
Website: www.NorbyGolfDesign.com



TEE IMPROVEMENT STUDY

Bemidji Town & Country Club

Bemidji, MN



Existing Scorecard

BLUE TEES 71.6/130	350	210	314	500	389	421	183	393	510	3270	499	193	405	350	181	492	377	354	424	3275	6545	
WHITE TEES 70.3/127	345	165	305	485	369	392	163	383	489	3096	487	168	390	330	150	465	360	347	417	3114	6210	
COMBO TEES 68.2/122	345	165	305	485	304	300	163	304	489	2860	487	168	345	330	150	465	306	347	359	2957	5817	
GOLD TEES 66.0/116	290	145	299	390	304	300	146	304	433	2611	445	155	345	320	135	393	306	332	359	2790	5401	
HANDICAP	11	17	13	7	3	1	15	5	9		6	16	2	14	18	8	10	12	4			
HDCP																						
HDCP																						
HOLE	1	2	3	4	5	6	7	8	9	OUT	Initials	10	11	12	13	14	15	16	17	18	IN	TOT
HDCP																						
HDCP																						
PAR	4	3	4	5	4	4	3	4	5	36	5	3	4	4	3	5	4	4	4	36	72	
RED TEES 69.0/117	286	136	252	387	301	297	136	297	429	2521	442	143	293	273	110	390	257	242	356	2506	5027	
HANDICAP	7	17	13	3	5	9	15	11	1		2	16	8	10	18	6	12	14	4			

Golf Course Architects:



131 Highland Drive

Carver, MN 55315

(952) 361-0644

email: Kevin@NorbyGolf.com

web: NorbyGolfDesign.com

Proposed Scorecard

BLUE TEES 71.6/130	350	210	314	500	389	421	183	393	510	3270	499	193	405	350	181	492	377	354	424	3275	6545	
WHITE TEES 70.3/127	345	165	305	485	369	392	163	383	455	3,062	487	168	390	330	150	465	360	347	405	3102	6164	
COMBO TEES 68.2/122	345	165	305	485	325	360	163	340	455	2,943	487	168	345	330	150	465	306	347	359	2957	5900	
GOLD TEES 66.0/116	290	145	299	445	325	360	146	340	433	2,783	445	155	345	320	135	393	306	295	359	2753	5536	
HANDICAP	11	17	13	7	3	1	15	5	9		6	16	2	14	18	8	10	12	4			
HDCP																						
HDCP																						
HOLE	1	2	3	4	5	6	7	8	9	OUT	Initials	10	11	12	13	14	15	16	17	18	IN	TOT
HDCP																						
HDCP																						
PAR	4	3	4	5	4	4	3	4	5	36	5	3	4	4	3	5/4	4	4	4	36	71/72	
RED TEES 69.0/117	255	120	230	387	265	297	80	297	375	2,306	355	90	293	245	105	325	230	242	305	2190	4496	
HANDICAP	7	17	13	3	5	9	15	11	1		2	16	8	10	18	6	12	14	4			



September 28, 2023

